

# Report sightings!

Email a photo to:

[SpottedLanternfly@agriculture.ny.gov](mailto:SpottedLanternfly@agriculture.ny.gov)

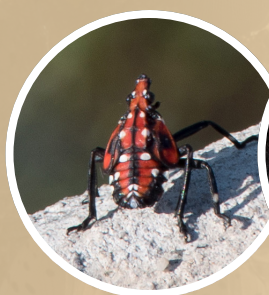


# Spotted Lanternfly

# WANTED

IN THE FINGER LAKES

**FOR THE  
DESTRUCTION  
OF CROPS  
& PROPERTY**



Nymph



Adult



Egg Mass



**SCAN ME!**

## VIOLATIONS:

Spotted Lanternfly is an invasive pest with several prior offenses:

- **Destroying** crop and plant species
- **Vandalizing** with black mold
- **Threatening** food, beer and wine industries
- **Sabotaging** local economy

## DESCRIPTION:

Spotted Lanternfly is often misidentified. Here's how to spot it:

- **One inch** long
- **Gray-brown** forewings with black spots
- **Bright red** underwings
- **Gathers on trees**, especially Tree of Heaven



HOBART AND WILLIAM SMITH  
COLLEGES



Department of  
Environmental  
Conservation



NEW YORK STATE  
INVASIVE SPECIES  
MANAGEMENT

Cornell Cooperative Extension

Seneca County

Cornell Cooperative Extension

Broome County

IF SEEN, PLEASE TAKE A PHOTO AND E-MAIL IT TO: [SpottedLanternfly@agriculture.ny.gov](mailto:SpottedLanternfly@agriculture.ny.gov)