



**Agriculture  
and Markets**

# Spotted Lanternfly Update

Survey and Response to  
Detecting SLF in NY



Photo: Brian Walsh, Salix Springs Landscaping

**October, 2020**

**Thom Allgaier, Invasive Species Coordinator**

**Michael Formichelli, Horticultural Inspector 1**

# SLF Response Partners

- New York State Dept. of Agriculture and Markets (AGM)
- New York State Dept. of Environmental Conservation (DEC)
- New York State Office of Parks, Recreation, and Historic Preservation (OPRHP)
- New York City Dept. of Environmental Protection (DEP)
- USDA – APHIS – Plant Protection and Quarantine (USDA-APHIS-PPQ)
- Regional PRISM's
- New York State Dept. of Transportation (DOT)
- New York State Natural Heritage Program
- New York City Dept. of Transportation (DOT)
- New York City Parks & Recreation

# Spotted lanternfly (SLF)

## *Lycorma delicatula*

- Plant hopper native to China and Southeastern Asia
- Discovered in Pennsylvania in 2014
- Use mouthparts to feed on the sap of more than 70 plant species
  - Prefer tree-of-heaven (*Ailanthus altissima*)
  - Grapes, apples, hops, maples, walnuts, sumac, oaks, pines



Photo: USDA

# SLF impacts

- Feeding stresses plants, making them vulnerable to disease and attacks from other insects
- Excrete sticky honeydew
  - Attracts sooty molds that interfere with plant photosynthesis, negatively affecting the growth and fruit yield of plants
- Impacts quality of life; hinders outdoor activities



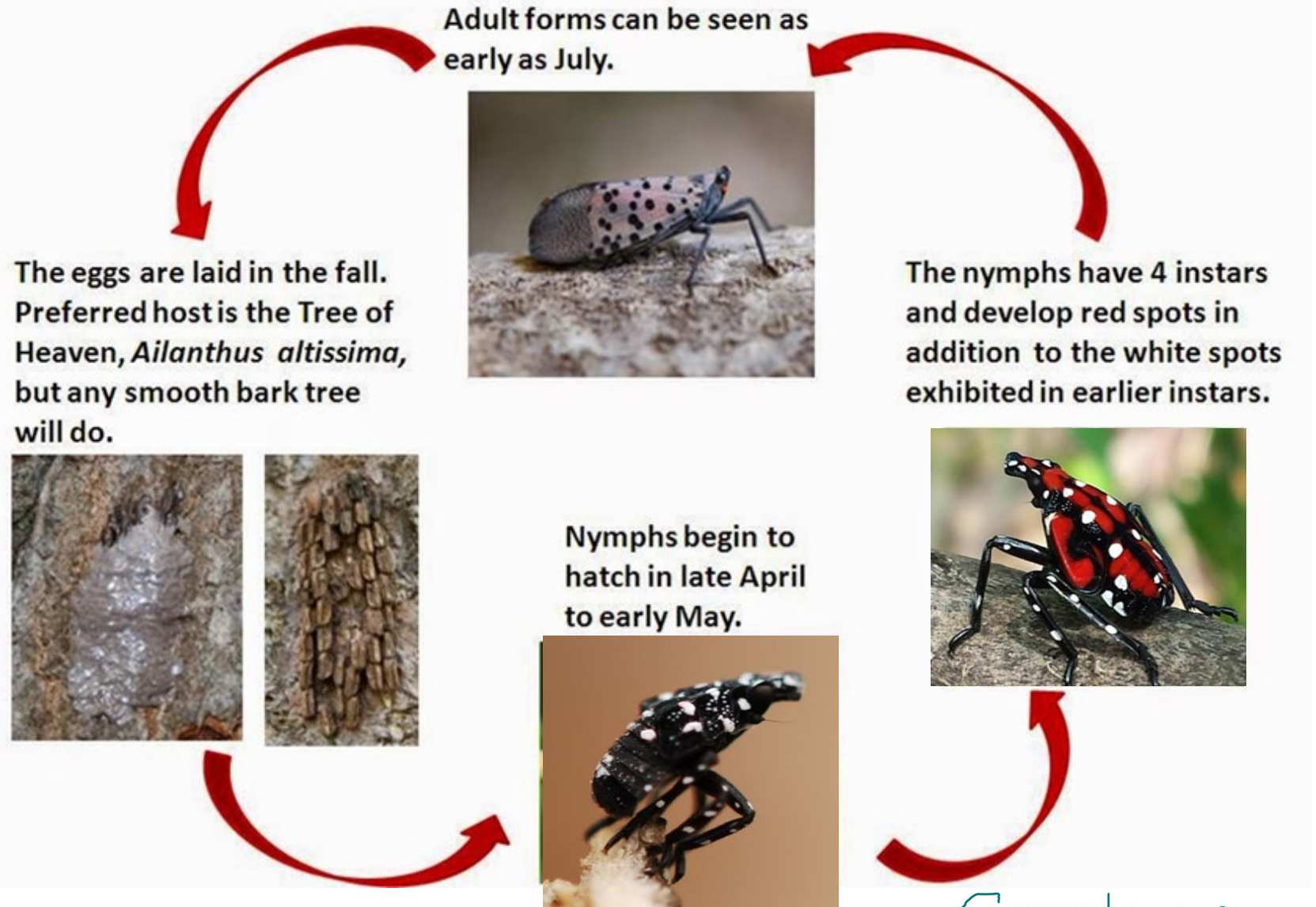
Photos: NYSDEC & PA Dept of Agriculture

# SLF impacts

- Feeding stresses plants, making them vulnerable to disease and attacks from other insects
- Excrete sticky honeydew
  - Attracts sooty molds that interfere with plant photosynthesis, negatively affecting the growth and fruit yield of plants
- Impacts quality of life; hinders outdoor activities



# Life Cycle





Month	Eggs	1 <sup>st</sup> -3 <sup>rd</sup> instar	4 <sup>th</sup> instar	Adults
August				
September				
October				
November				
December				
January				
February				
March				
April				
May				
June				
July				

# Survey



Photo: Penn State



Photo :Lower Hudson PRISM



Photo: Penn State

# Survey

## Circle Trap



Photo: NJ Dept of Ag.

## Bug Barrier



Photo: Southern Organics & Supply

# Eggs



Photo: NYS DOT

# Egg Masses - Under and on bark



Photos: USDA



Department of  
Agriculture and Markets

# Egg Masses - Under Bark



Photos: USDA

# Eggs



Photo Credits: NYSDAM

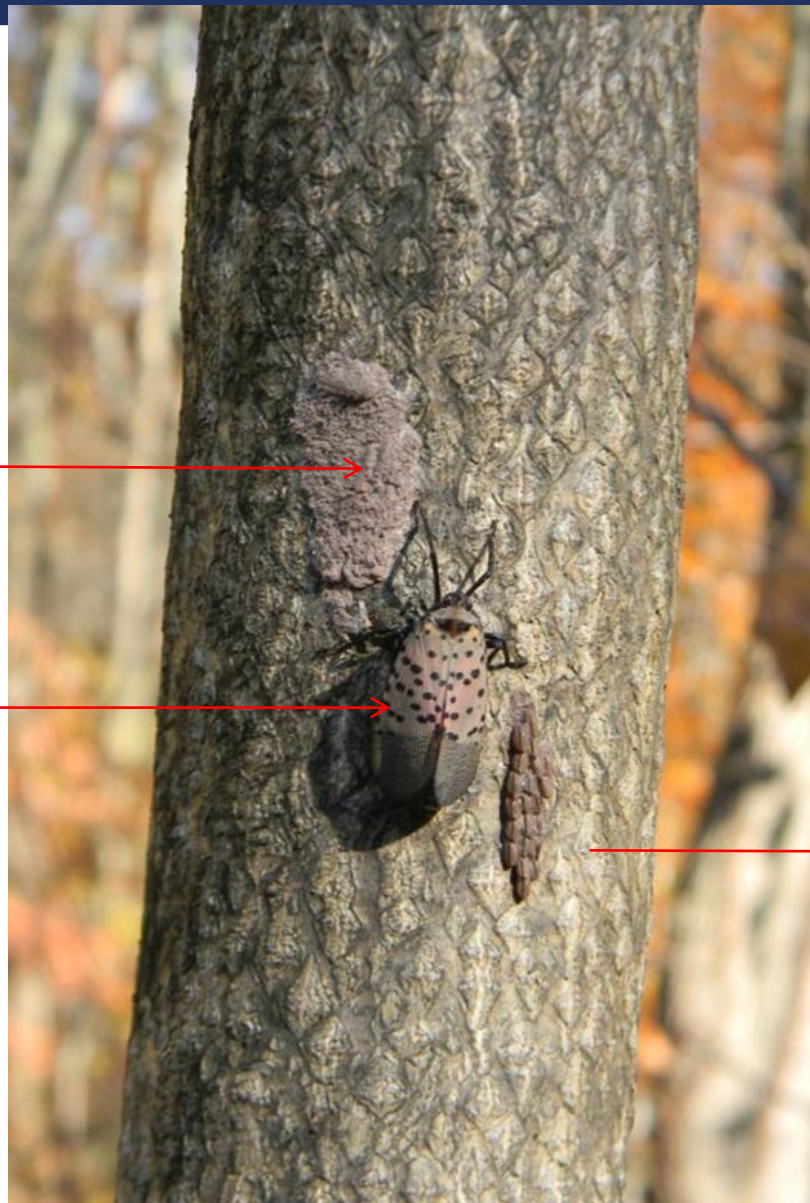


Agriculture  
and Markets

# Eggs

Covered egg mass

Adult SLF



Uncovered egg mass



Department of  
Agriculture and Markets

# Eggs

Covered  
egg  
mass

Uncovered  
egg  
mass



Photo: Willistown Township, PA



Photo: Penn State Extension

Photo: NYSDAM

# Eggs



Photo: USDA PPQ



**Department of  
Agriculture and Markets**

# Unintended Transport



Photo: PA Dept. of Ag.



Photo: NYSDAM



**Department of  
Agriculture and Markets**

# Unintended Transport

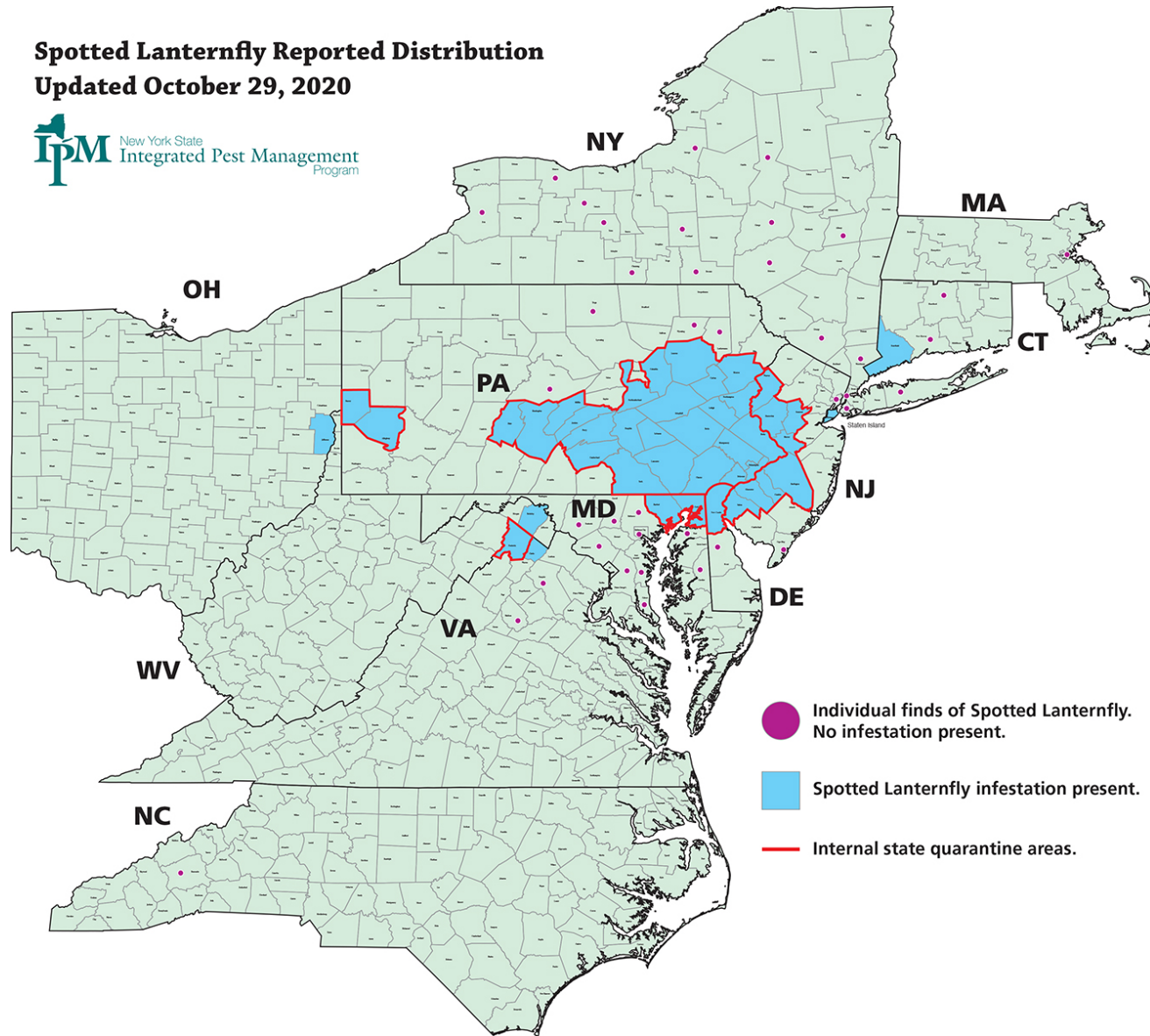


Photos: PA Dept of Agriculture



Department of  
Agriculture and Markets

**Spotted Lanternfly Reported Distribution**  
**Updated October 29, 2020**



- Individual finds of Spotted Lanternfly. No infestation present.
- Spotted Lanternfly infestation present.
- Internal state quarantine areas.



**Department of  
Agriculture and Markets**

## §142.2 Quarantine area

- The quarantine area consists of the following counties:
- (a) in the Commonwealth of **Pennsylvania**, the Counties of Berks, Bucks, Carbon, Chester, Dauphin, Delaware, Lancaster, Lebanon, Lehigh, Monroe, Montgomery, Northampton, Philadelphia, and Schuylkill;
- (b) in the Commonwealth of **Virginia**, the County of Frederick;
- (c) in the State of **New Jersey**, the Counties of Hunterdon, Mercer, and Warren;
- (d) in the State of **Delaware**, the County of New Castle;
- (e) in the State of **Maryland**, the County of Cecil.
- Current through March 15, 2020



# §142.3 Regulated articles

- §142.3 Regulated articles.
- The following articles are regulated when originating from, located within, or moved through the area as described in Section 142.2 of this Part:
- (a) **Any living life stage of the Spotted lanternfly.**
- (b) Brush, debris, bark, or yard waste.
- (c) **Landscaping, remodeling, or construction waste.**
- (d) Logs, stumps, or any tree parts.
- (e) Firewood of any species.
- (f) **Packing materials**, such as wood crates or boxes.
- (g) **All plants and plant parts** including but not limited to nursery stock, green lumber, fruit and produce and other material living, dead, cut, fallen (including stumps), roots, branches, mulch, and composted and uncomposted chips.
- (h) **Outdoor household articles**, including, but not limited to, recreational vehicles, lawn tractors and mowers, mower decks, grills, grill and furniture covers, tarps, mobile homes, tile, stone, deck boards, mobile fire pits, and any equipment associated therewith, and trucks or vehicles not stored indoors.
- (i) **Any other article, commodity, item, or product that has or that is reasonably believed to be infested with or harboring Spotted lanternfly.**



## §142.4 Restrictions on movement of regulated articles originating from or moved through a quarantine area, into the State of New York

- (a) No person shall move a regulated article that has originated from a quarantine area into the State of New York unless:
  - (1) such regulated article is accompanied by a **certificate of inspection** or will be moved into the State of New York for experimental or scientific purposes, on such conditions and under such safeguards as may be prescribed in writing by the Department; and
  - (2) such regulated article has been loaded, handled, or shipped in a manner reasonably designed to prevent it from becoming infested with or harboring Spotted lanternfly; and
  - (3) the regulated article is **accompanied by a waybill** that sets forth its point of origin and intended destination.
- (b) No person shall move a regulated article that has not originated from a quarantine area but has moved through a quarantine area, into the State of New York unless:
  - (1) such regulated article is **accompanied by a waybill** that sets forth its point of origin and intended destination; and
  - (2) such regulated article **has moved directly through a quarantine area without stopping** except for refueling and traffic conditions.



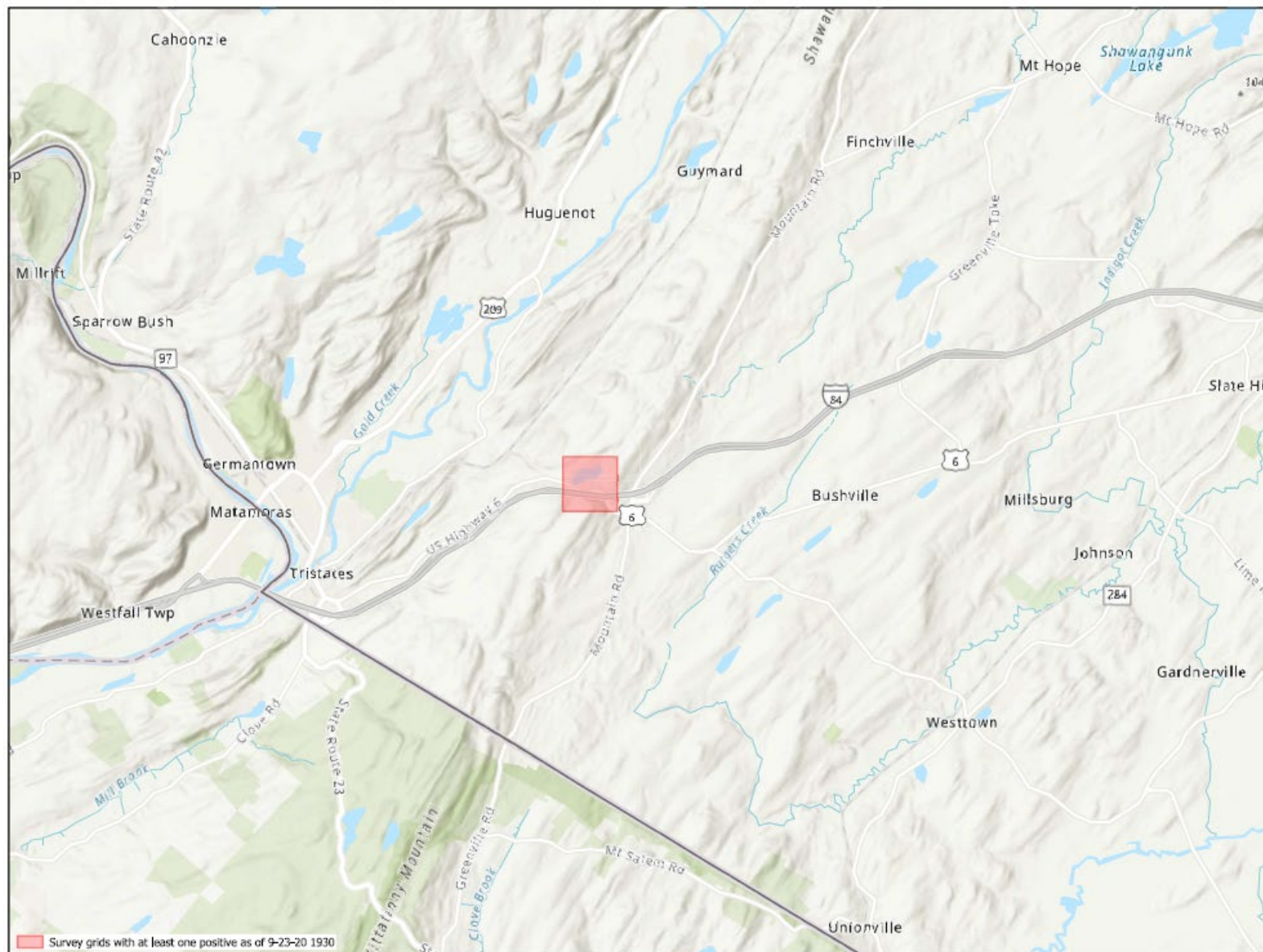
Statewide  
Positive Traps  
(7 total)



## Staten Island Positive Traps



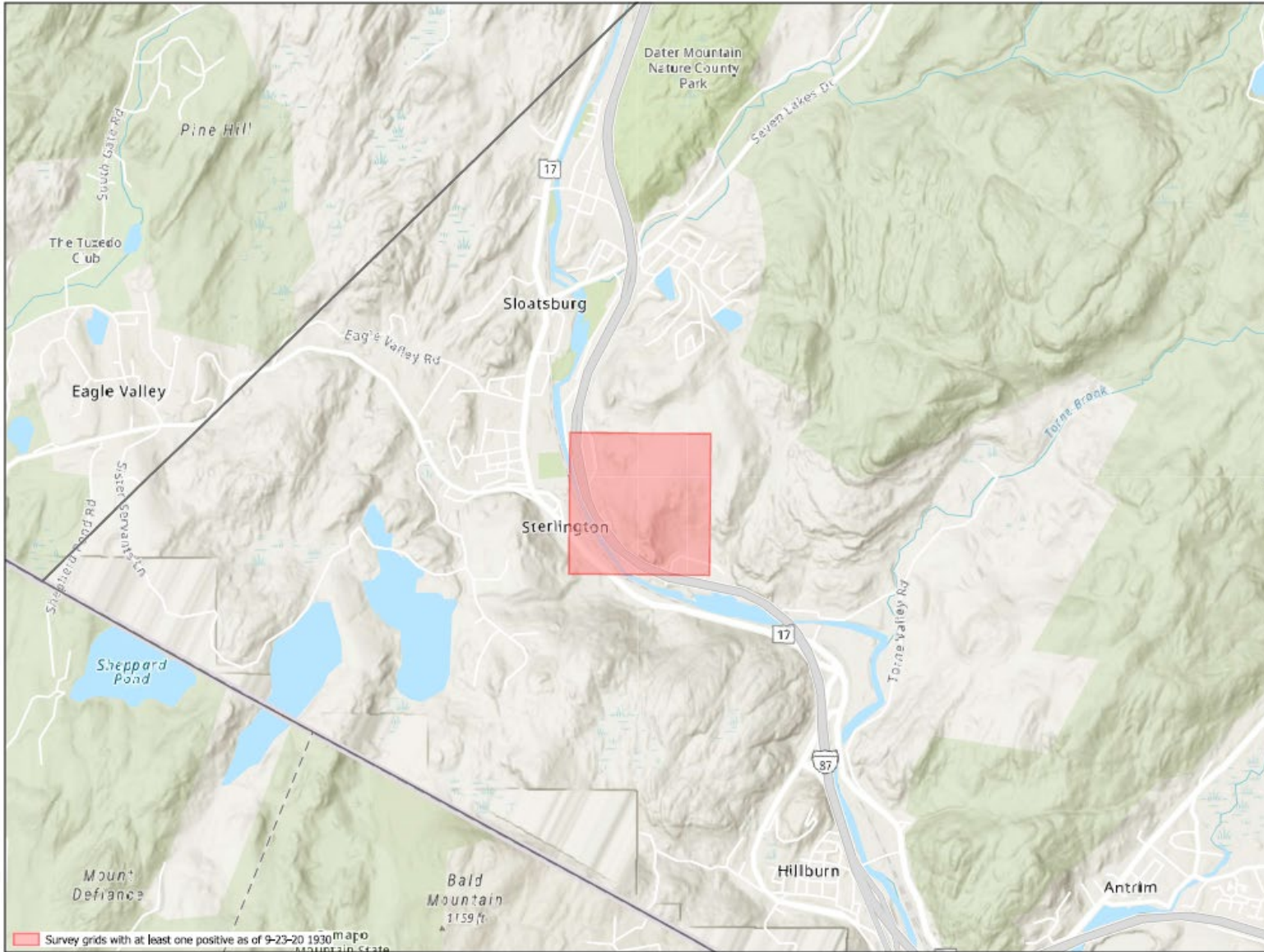
Department of  
Agriculture and Markets



Port Jervis  
(Orange County)  
Positive Grid



**Department of  
Agriculture and Markets**

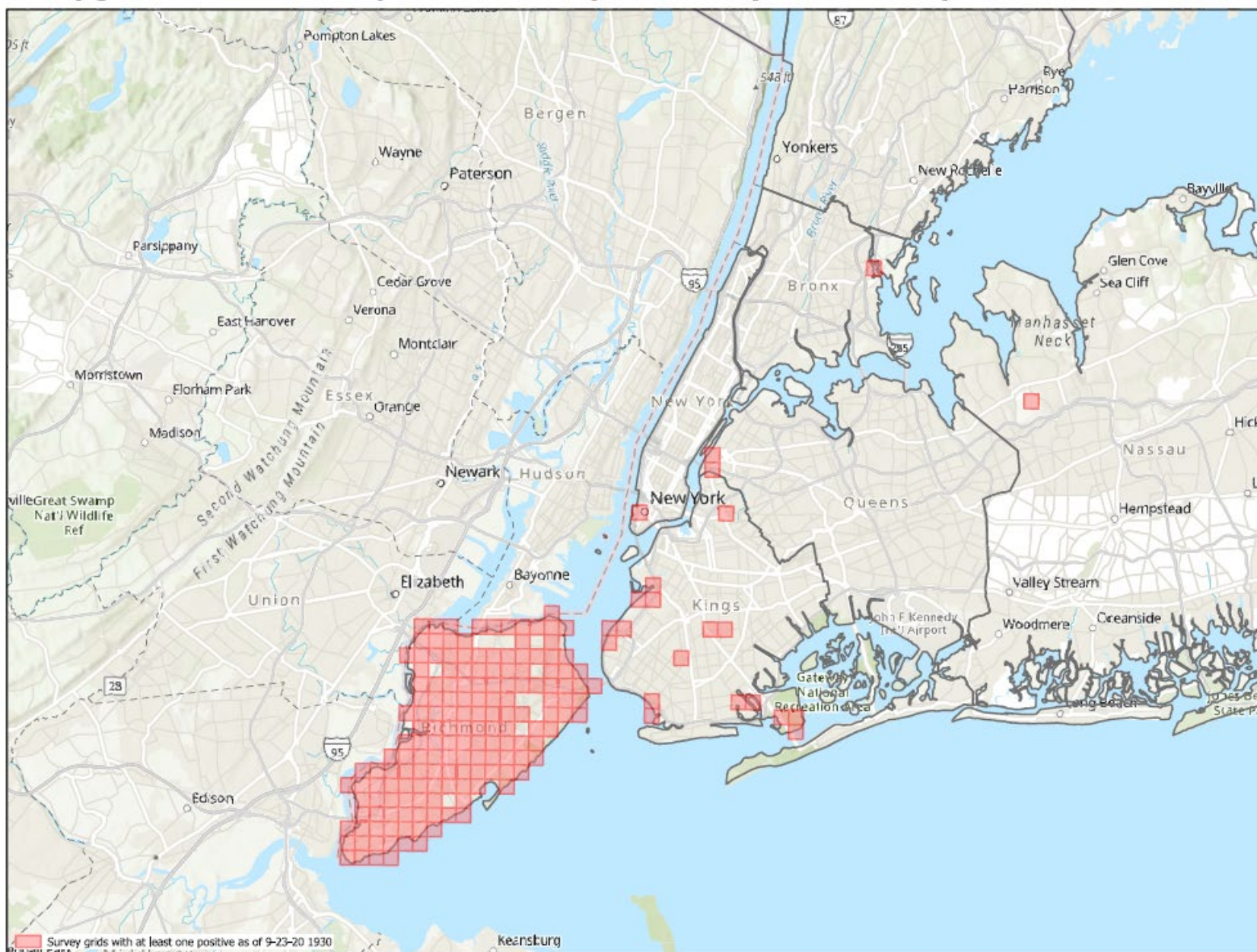


## Sloatsburg (Rockland County) Positive Grid



**NEW YORK**  
STATE OF  
OPPORTUNITY

**Department of  
Agriculture and Markets**



## Metro New York Positive Survey Grids



Department of  
Agriculture and Markets

# To Report a Sighting of Spotted Lanternfly in New York State



- **SLF Reporting** [spottedlanternfly@agriculture.ny.gov](mailto:spottedlanternfly@agriculture.ny.gov)